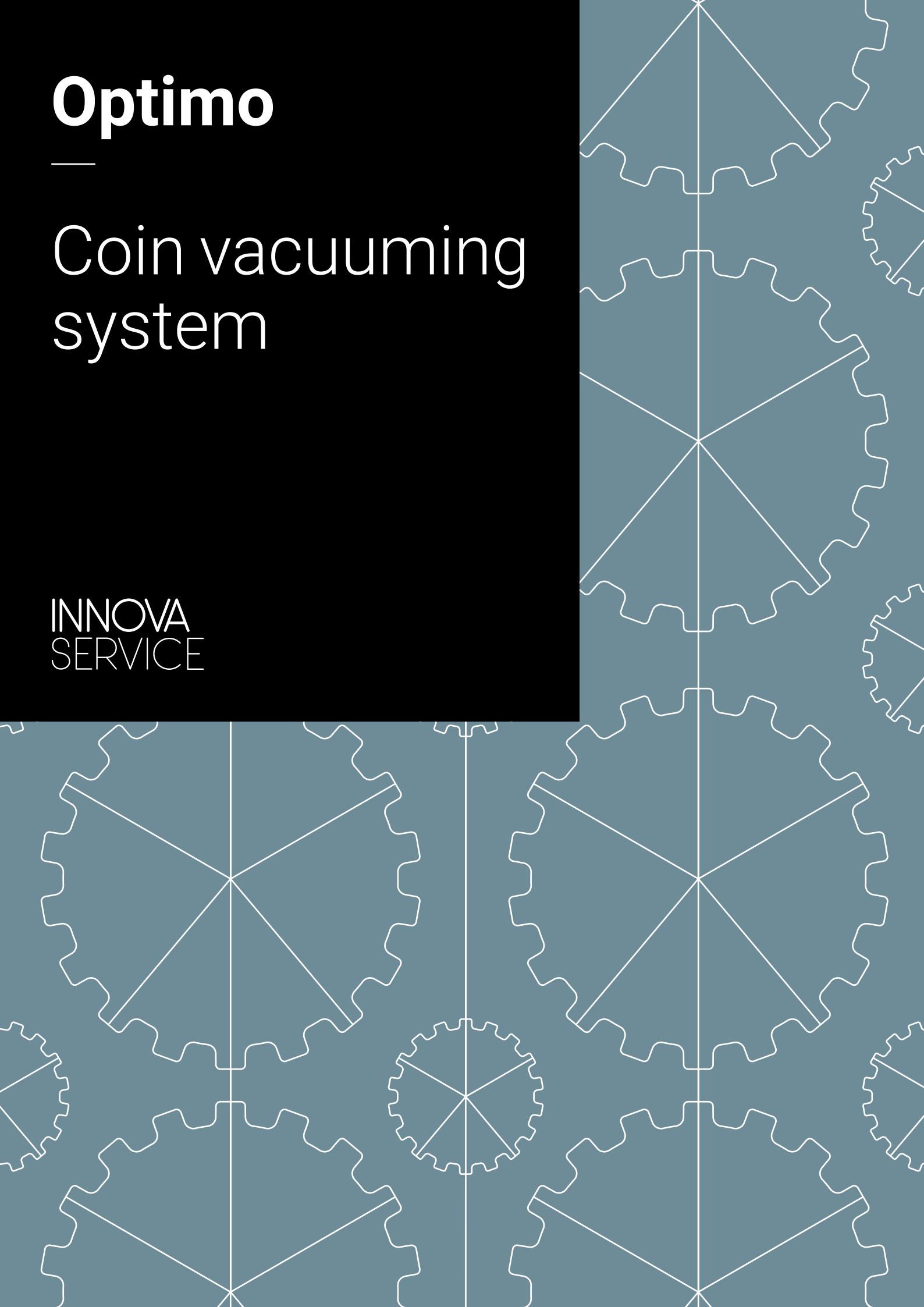


Optimo

Coin vacuuming system

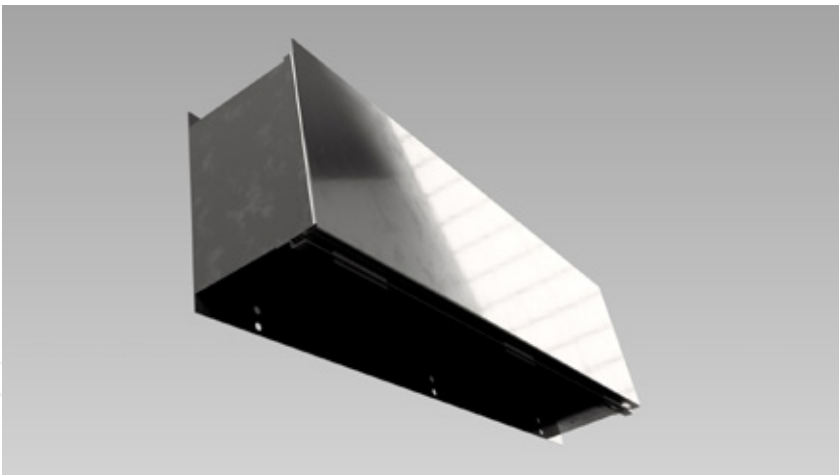
INNOVA
SERVICE



About Optimo

The Optimo is a custom designed coin vacuum system which is meant to be installed inside the technical rooms, or in an underground basement under it. It's completely made from stainless steel and guarantees a long life of the system.

It takes from one up to eight vacuuming units connected to one system. Units can be combined - vacuuming from wash bays and other devices in the same system.

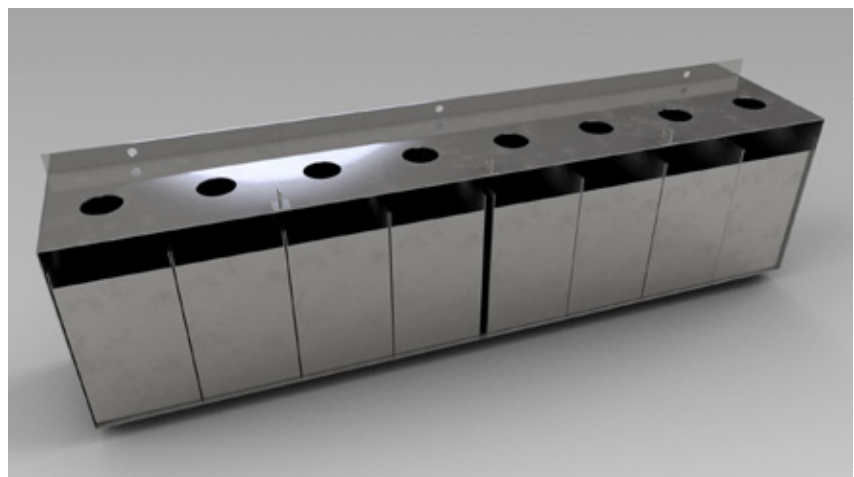


Coin Box

Made completely from stainless steel, wall mounted inside the technical room or in underground basement.

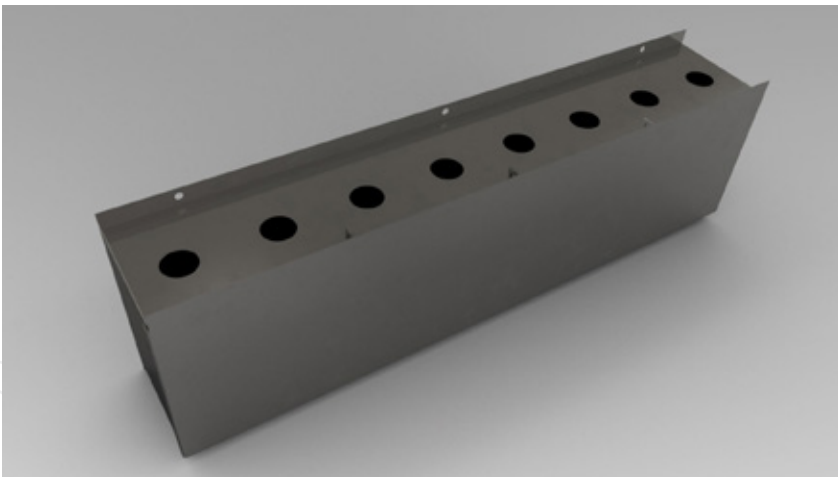
Coin Storage

Each vacuuming place has its own storage box so clients have exact knowledge about the income from each vacuuming place.



Technical details

- Turbine with power of 3kW
 - Schneider electric PLC controllers
 - Schneider electric electrical components
 - Air or electrical valves.
 - Stainless steel structure
 - Locking of central storage tank in 2 or 3 positions, depending on configuration
 - Regulation of vacuuming time over a fixed timer where user can choose how long will it take between each vacuuming proces,
- or regulation so it works on impuls once the program is started
- Regulation of vacuuming time for each wash bay separately. With this feature you save electrical power by regulating less vacuuming time for places closer to the vacuuming unit
 - Coins are stored separately for each vacuuming place, allowing the client to have total knowledge about income of each vacuuming place.

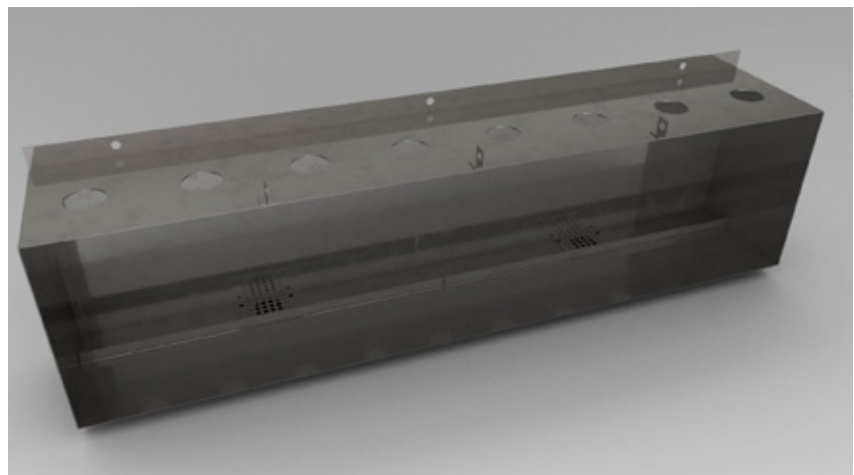


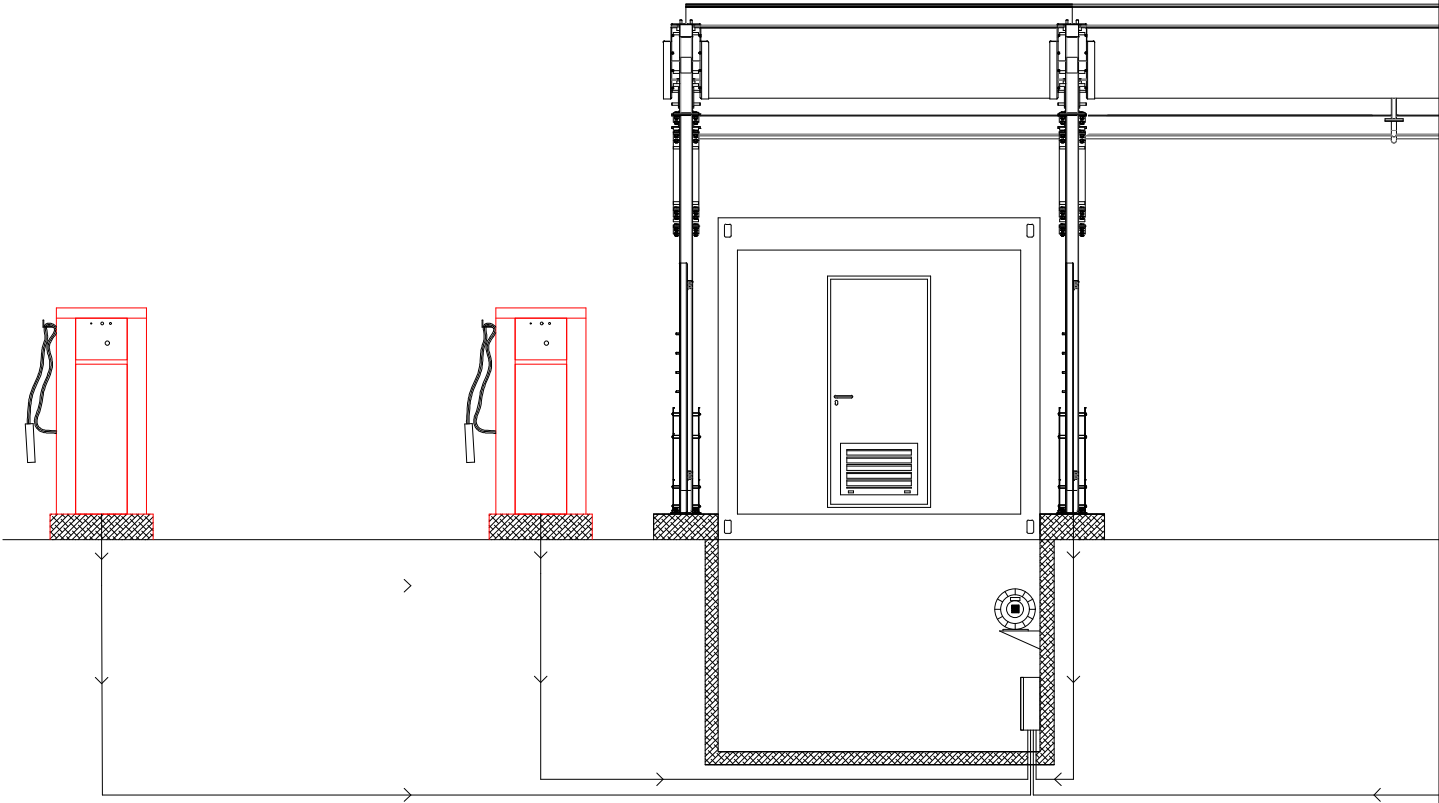
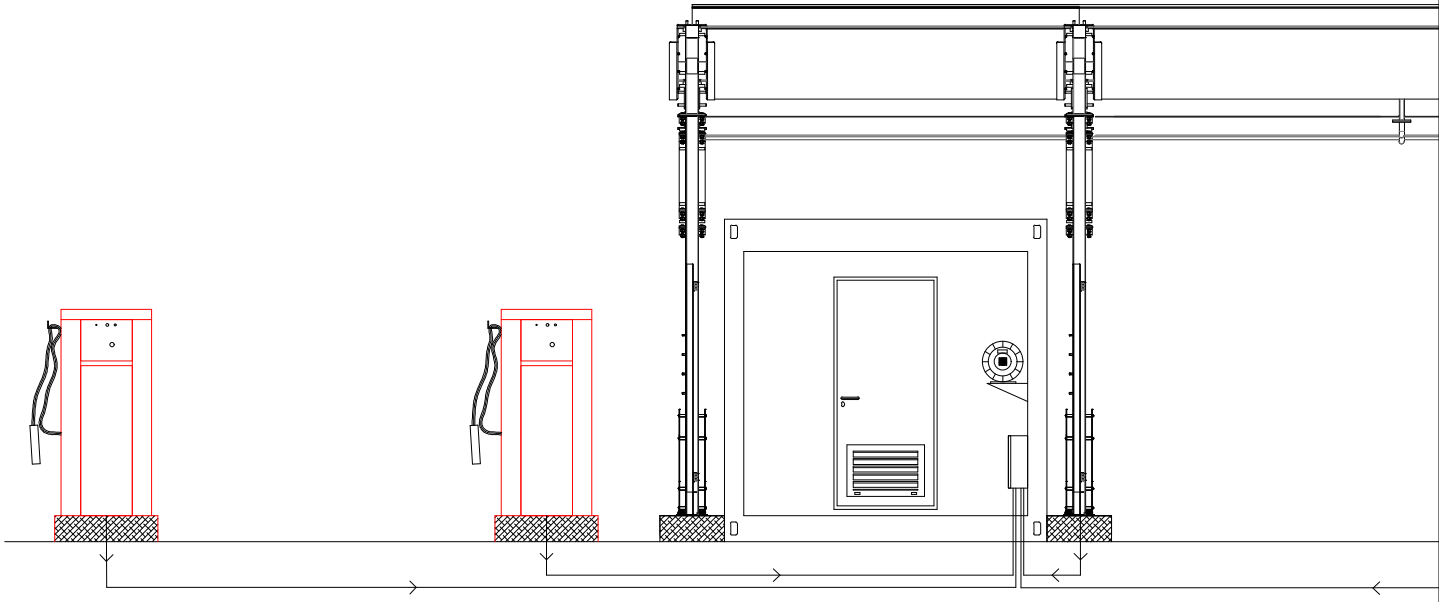
Locking Points

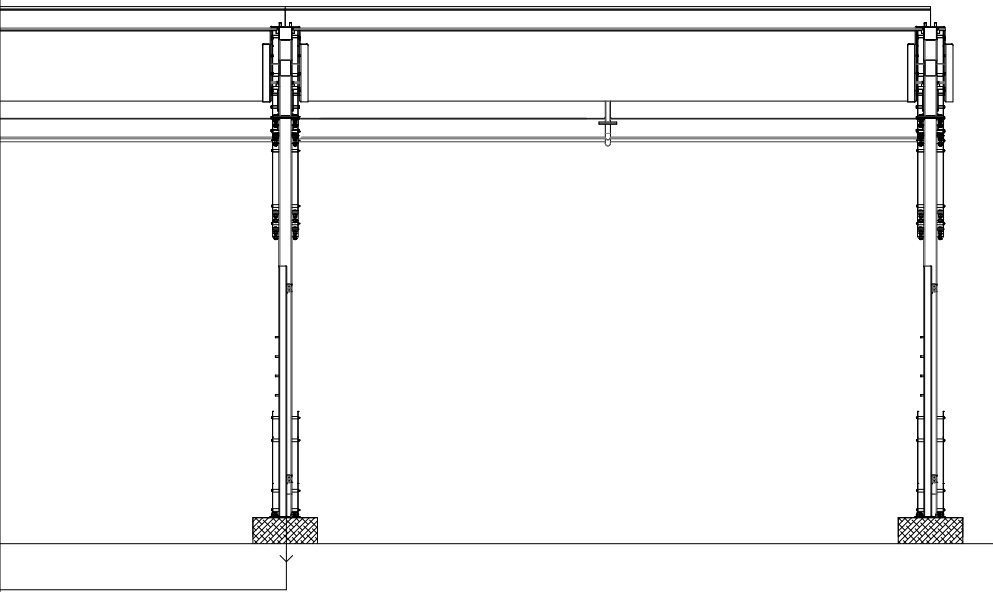
Locking in two or three positions, depending on the size of the configuration. Ensuring that the coin box is always safe and impossible to open.

Suction Points

Coin box for up to eight vacuuming places with two suction points when more than six places is used. All suction points are covered to prevent the dirt coming into the turbine so it's protected all the time.



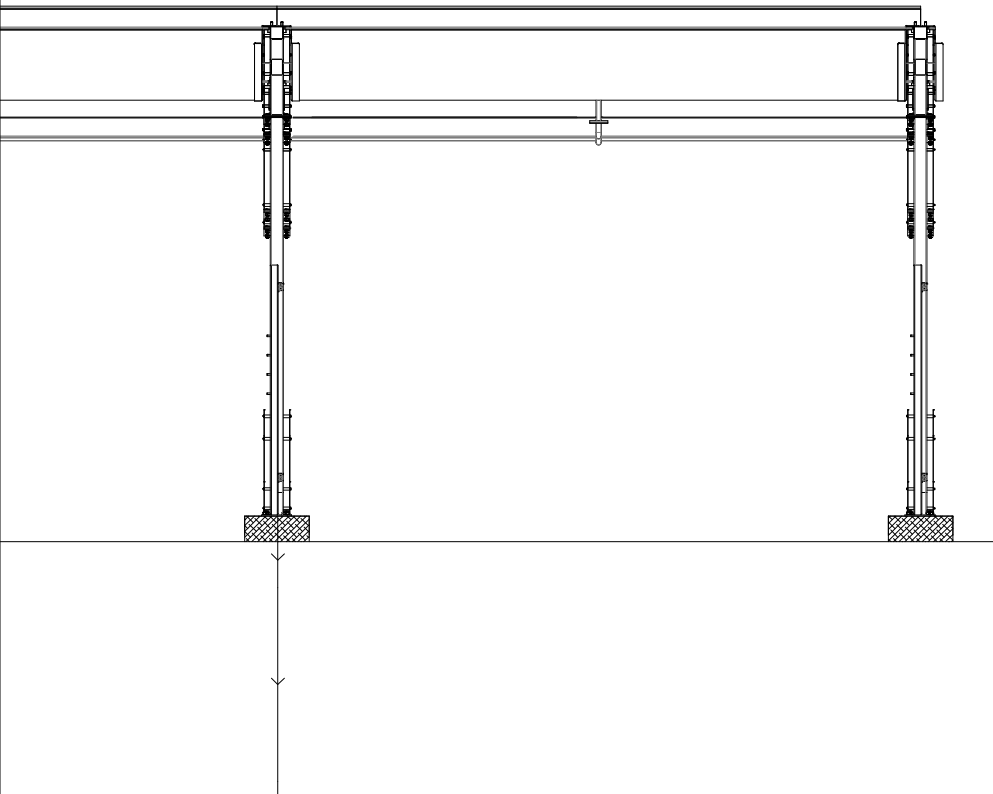




Installation inside technical room

All equipment is installed inside the technical room if it's allowed by space inside it. More practical way for clients since coin box is more accessible.

Turbine can be distanced up to 3m from the coin box so equipment can be displaced inside the technical room as much as the space allows it.



Installation inside underground basement

Complete system is installed in an underground room which allows more neat installation since it's not too much limited with free space. This is a better option in sense of installation and installation time itself is shorter.

We recommend this option as a better one for all clients.



E marko@innovaservice.hr
T +385 997 000 060
W www.innovaservice.hr
F facebook.com/innovaservice.hr

A Celine 2
10430 Samobor
Hrvatska

INNOVA
SERVICE